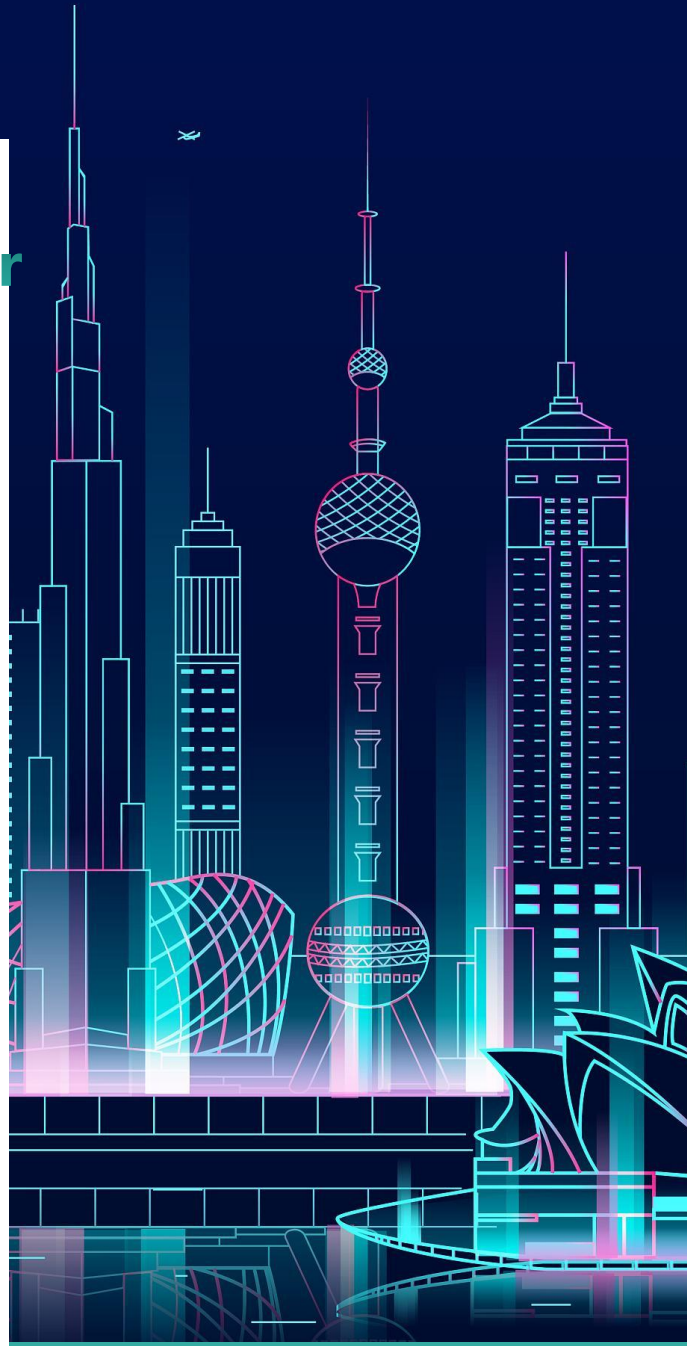


Technical Specification for SR700 (Single Module&Dual-SIM 4G



VERSION NUMBER: **V2.3**

XIAMEN KEY-IOT TECHNOLOGY CO., LTD
www.key-iot.com



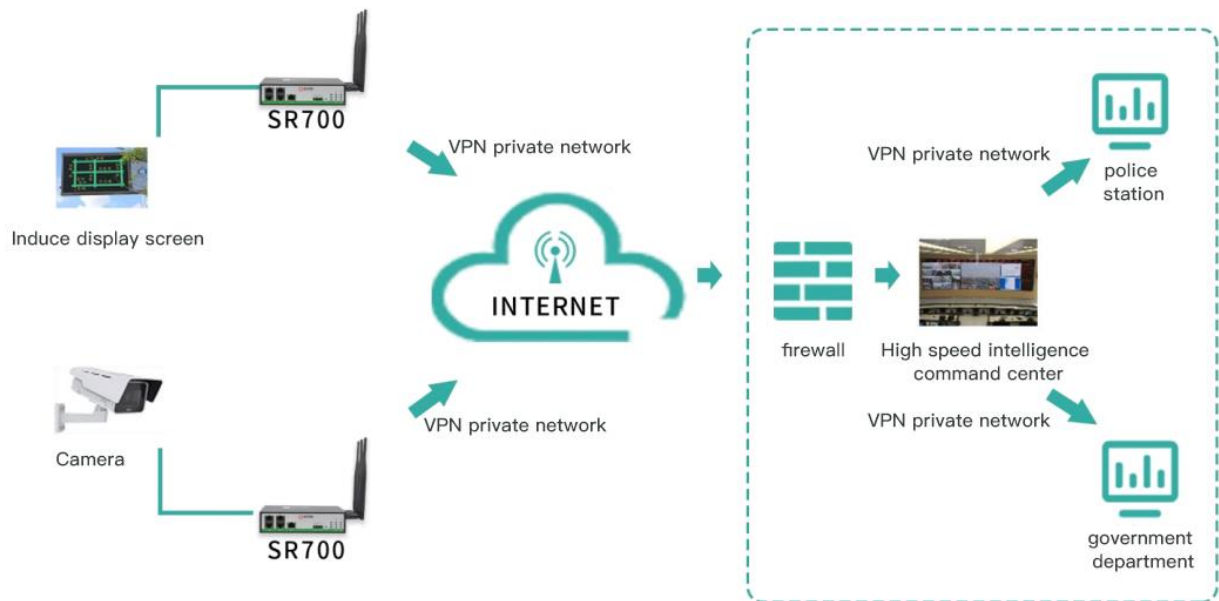
Product Overview

The SR700 product is an IoT wireless router product that integrates 4G/5G networks, virtual private networks, and other technologies. Leveraging 4G/5G wireless wide area network and Wi-Fi wireless local area network technologies, this device provides uninterrupted access to various networks. With its comprehensive security and wireless service features, it offers users a high-speed and stable data transmission channel.

Product Features

- Supports 5 Ethernet ports
- Supports WLAN (optional)
- Supports wired and wireless backup
- Supports rail and desktop installation
- Supports dual-operator network backup (dual SIM cards)
- Supports efficient completion of large-scale device network deployment
- Industrialized design, capable of withstanding challenging conditions
- Supports 4G LTE CAT4 high-speed network, optional 1.8GHz private network
- Supports Linux OpenWrt system, facilitating user secondary development, and providing comprehensive secondary development guidelines
- Supports various VPN functions: PPTP, L2TP, IPSEC, OPENVPN, GRE, GRE-TAP, Vxlan, etc
- Supports SNMP and StarLink STAR DEVICE MANAGER StarCloud platform, enabling efficient remote centralized network management

Topology Diagram



Technical Parameters

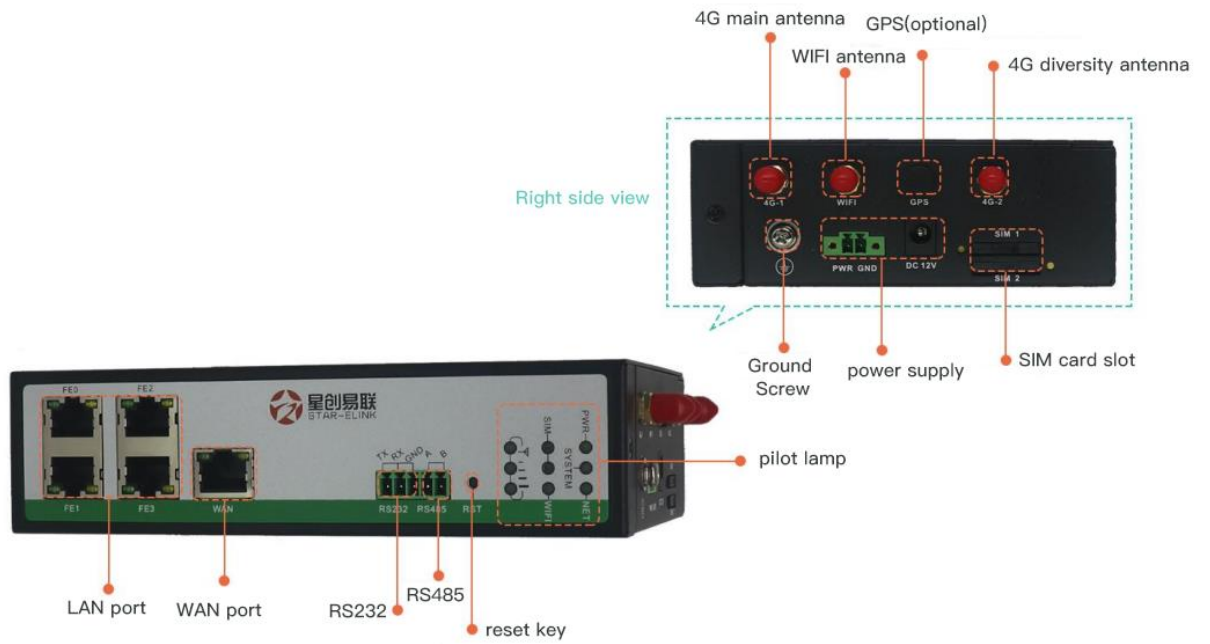
Technical Parameters

Memory	128MB
FLASH	16MB
WIFI (optional)	2.4G supports 802.11b/g/n, with a maximum speed of 150Mbps
Network support	Industrial-grade 4G module, supporting seven-mode networks
System time	Time synchronization using NTP technology, with built-in RTC
Interfaces	
WAN port	1 WAN port
LAN port	4 ports (10M/100M/1000M adaptive MDI/MDIX port)
SIM card interface	2 slots (drawer-type card slot, supporting 1.8V/3V SIM/UIM cards)
Reset	1 (reset button)
Antenna interface	2 ports (3G/4G antenna, 50-ohm impedance, SMA female inner hole interface)
	1 port (2.4G antenna, 50-ohm impedance, SMA inner pin interface)
Power terminal	1 terminal (2-pin 3.81mm pitch connector)
Console port	1 port.

Indicators	9 (1 PWR indicator, 1 SYS indicator, 3 signal strength indicators, sim1, sim2, 1 WiFi indicator, 1 NET indicator)
Power Characteristics	
Power	External power adapter (12V 1A)
Operating voltage	Wide power input DC 5~36V (expandable 5-60V)
Standby power consumption	150~230mA@12V DC
Operating power consumption	250~310mA@12V DC
Operating conditions	
Operating temperature	-35~+75°C (-31~+167°F)
Storage temperature	-40~+85°C (-40~+185°F)
Operating humidity	5%~95% (non-condensing)
Device ventilation	Natural heat dissipation ,no noise
Physical Characteristics	
Enclosure	Full metal enclosure
Dimensions	Length*width*height 126*44*126mm (excluding antenna and installation accessories)
Installation method	Desktop placement, rail installation, wall mounting
Weight	Net weight: 0.67KG (excluding antenna and installation accessories)
	Gross weight: 0.95KG (with accessories and packaging box)
Device Safety and Reliability	
Safety and Reliability	Reverse polarity protection, overvoltage protection, overcurrent protection; Ethernet interface built-in 1.5KV electromagnetic isolation protection; RS232/RS485 interface built-in 15KV ESD protection; SIM/UIM card interface built-in 15KV ESD protection
Protection level	IP30
Certification	Compliant with CCC, RoHS
MTBF	≥ 100,000 hours
Software Features	
Network access	Supports APN VPDN
Access authentication	Supports CHAP/PAP authentication
Network mode	GSM/GPRS/EDGE, LIMTS/HSPA+/EVDO/TD-SCDMA/TD-LTE/FDD LTE
LAN protocol	Supports ARP, Ethernet
WAN protocol	Supports static IP, DHCP, PPPoE, PPP
IP applications	Supports Ping, Trace, DHCP Server, DHCP Relay, DHCP Client, DNS relay, DDNS, Telnet
IP routing	Supports routing
NAT function	Supports network address translation
Industrial protocols	Supports environmental protection 212 protocol, supports MQTT, MUDBUS, and other industrial protocols
Network Security	

Firewall	Full state packet inspection (SPI), prevention of denial of service (Dos) attacks, filtering of multicast Ping packets, access control lists (ACLs), content URL filtering, port mapping, virtual IP mapping, IP-MAC binding
Data security	IPsec VPN/L2TP/PPTP/GRE/OPEN VPN/CA certificate
Reliability	
Backup function	Supports wired, 4G, and Wi-Fi triple backup
Link online monitoring	Sends heartbeat packets for detection and automatically reconnects when disconnected
Embedded watchdog	Equipment runs self-checking technology, and equipment automatically repairs faults
WLAN (optional).	
Protocol Standards	IEEE 802.11b/g/n
Speed	Supports 150Mbps
Security features	Open system, shared key, WPA/WPA2 authentication, WEP/TKIP/AES encryption
Operating mode	AP, Client mode
Transmission distance	100m (actual transmission distance depends on the environment)
Intelligence	
Integrated DTU function	Supports TCP, UDP transparent transmission mode, TCP Server mode, supports Modbus RTU to Modbus TCP bridge, supports DCUDP, DCTCP mode
Network Management	
QoS management	Supports bandwidth limitation, IP speed limit
Configuration method	Supports telnet, web, ssh, and console configuration methods
Upgrade method	Supports web upgrade, FOTA upgrade method
Log function	Supports local system logs, remote logs, serial port output logs
Network management function	Supports StarLink STAR Device Manager platform, batch management
Simple network management function	Supports SNMP v1/v2/v3, supports SNMP TRAP function
Traffic management	Supports traffic threshold setting, supports traffic statistics and traffic alert functions
Maintenance tools	Ping, route tracking
Status query	System status, modem status, network connection status, route status

Product Interfaces



Product Dimensions

单位:mm
unit:mm

