

SR830 MINI 5G

Router specification



VERSION NUMBER: **V1.0**

XIAMEN KEY-IOT TECHNOLOGY CO., LTD
www.key-iot.com



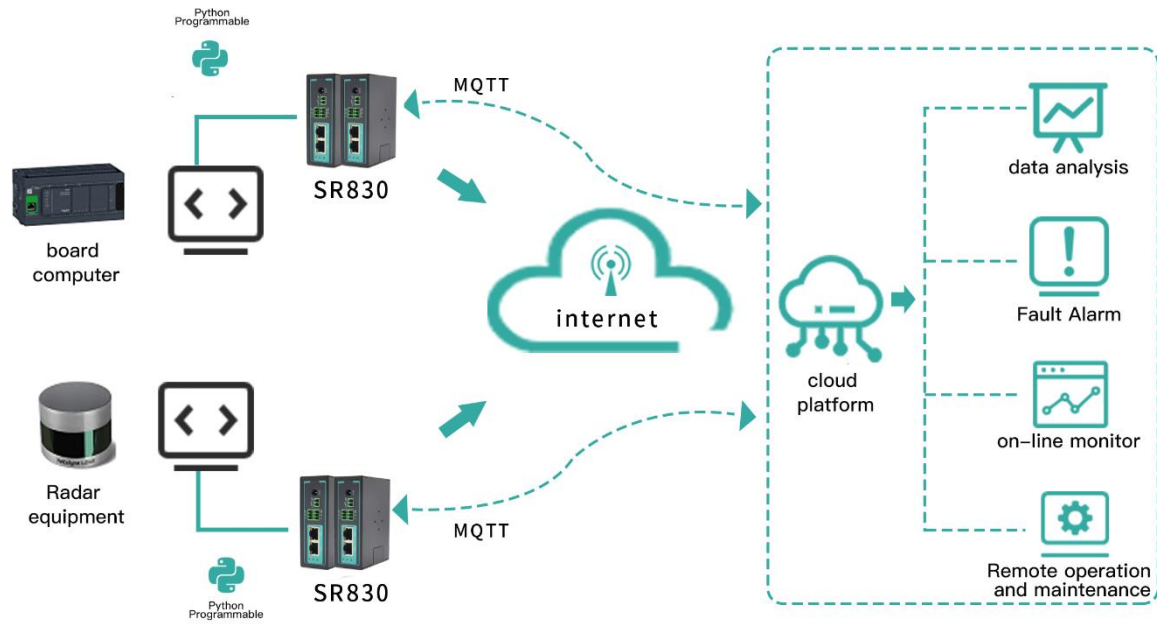
Product Overview:

The SR830 series products are IoT wireless router products that integrate 4G/5G networks, virtual private networks, and other technologies. The multi-DNN network slicing function meets the differentiated demands of industry applications, providing network-level SLA guarantees and E2E security isolation. This device supports Vxlan function for actual layer 2 switching networking, providing excellent solutions for data centers

Product Features:

- Supports networks of four major operators (China Mobile, China Unicom, China Telecom, China Broadcasting Network)
- Supports dual SIM and eSIM
- Supports multi-DNN
- Supports 5G NR high-speed network
- Equipped with 2 Ethernet ports
- Supports Din rail installation
- Supports dual power redundancy backup
- Supports efficient deployment of large-scale device networks
- Fully industrial design, capable of facing challenges in harsh conditions
- Supports Linux OpenWrt system, facilitating user secondary development and providing comprehensive secondary development guides
- Supports various VPN functions including PPTP, L2TP, IPSEC, OPENVPN, GRE, GRE-TAP, VXLAN, etc
- Supports SNMP and StarCloud STAR DEVICE MANAGER platform for efficient remote centralized network management

Topology Diagram



Technical Specifications

Hardware performance

Memory	512MB
FLASH	4GB EMMC
Network support	Industrial-grade 5G module
System time	Time synchronization using NTP technology with built-in RTC

interfaces

WAN port	1 WAN port,can be reused as LAN port
LAN port	1 (10M/100M/1000M adaptive MDI/MDIX port)
SIM Card Interface	1*flip card slot, 1*eSIM (optional).
TF Interface	1
Antenna Interface	4 (4G/5G antenna, 50 ohm impedance, SMA male connector)
Power	1(2-pin 3.81mm pitch connector), 1*DC power jack
Serial Port	1* RS232(console), 1*RS485
Indicators	3 (1 PWR light, 1 SYS light, 1 NET light)

Power Characteristics

Power Supply	External power adapter (12V 2A).
Operating Voltage	Wide power input DC 9~36V
Standby Power Consumption	300~500mA@12V DC
Operating Power Consumption	500~700mA@12V DC

Operating conditions

Operating Temperature	-35~+75°C (-31~+167°F)
Storage Temperature	-40~+85°C (-40~+185°F)
Operating Humidity	5%~95% (non-condensing)
Equipment Ventilation	Natural heat dissipation ,no noise

Physical Features

Chassis	Full-metal chassis
Dimensions	Length*width*height 100*75*35mm (excluding antenna mounting accessories)
Installation Methods	Desktop flat placement, rail mounting, wall-mounting
weight	Net weight: 030KG (excluding antennas and mounting accessories). Gross weight: 0.60KG (with accessories and packaging box)

Equipment Safety and Reliability

Safety and Reliability	Power reverse protection, overvoltage protection, overcurrent protection, Ethernet interface built-in 1.5KV electromagnetic isolation protection, RS232/RS485 interface built-in 15KV ESD protection, SIM/UIM card interface built-in 15KV ESD protection
Protection Level	IP30
Certification	Compliant with CCC, Rohs
MTBF	≥ 100,000 hours

Software Features

Network Access	Support APN/VPDN/slicing networks
Access Authentication	Supports CHAP/PAP authentication
Network Mode	5G Sub-6 SA/NASA/LATE/VCDMA
LAN Protocol	Supports ARP, Ethernet
WAN Protocol	Supports static IP,DHCP,PPPOE,PPP
IP Applications	Supports Ping、Trace、 DHCP Server、 DHCP Relay、 DHCP Clint、 DNS Relay、 DDNS、 Telnet
IP Routing	Supports routing
NAT Function	Supports network address translation
Industrial Protocols	Supports environmental protection 212 protocol, supports MQTT, MUDBUS and other industrial protocols

Network Security

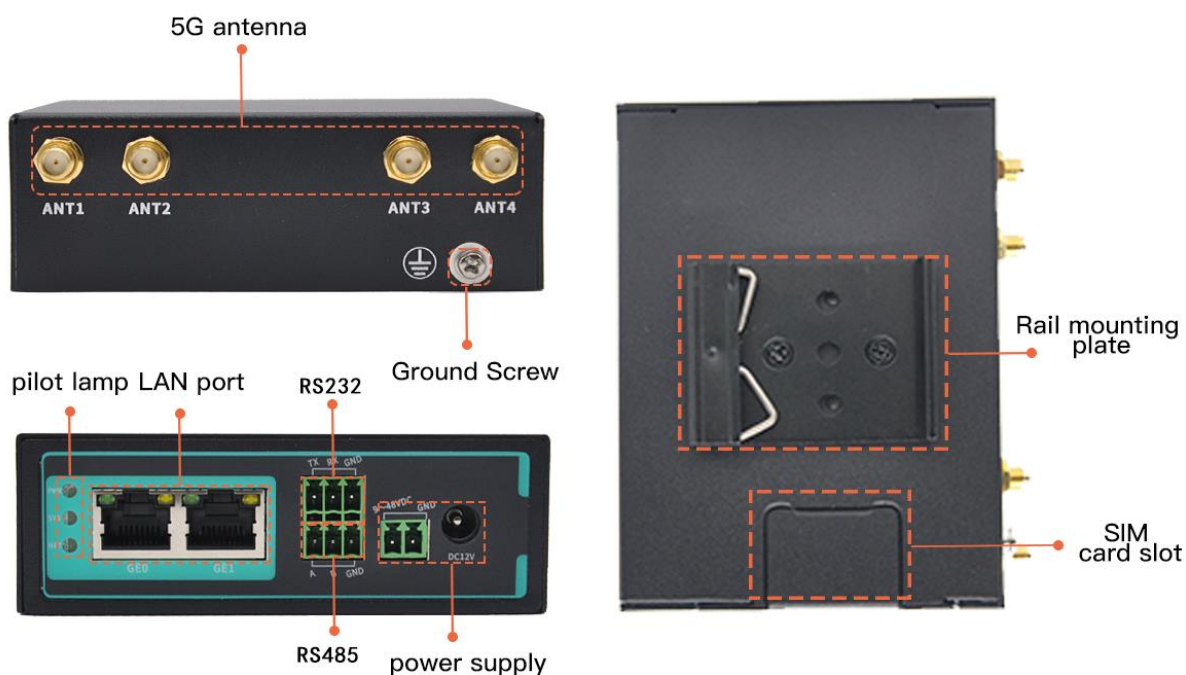
Firewall	Full state packet monitoring (SPI) defense against denial of service (DoS) attacks, filtering of multicast Ping packets, access control lists (ACL) ,URL filtering, port mapping, virtual IP mapping, IP-MAC binding
Data Security	IPsec VPN/L2TP/PPTP/GRE/GRETAP/Vxlan/OPEN VPN/CA certificate

Reliability

Backup Function	Supports wired, 5G, mutual backup
Link Online Monitoring	Sends heartbeat packets for detection, automatically reconnects when disconnected

Built-in Watchdog	Device self-checking technology, device fault self-repair
Intelligence	
Integrated DTU Function	Supports TCP, UDP transparent transmission mode, TCP Server mode, supports Modbus RTU to Modbus TCP bridge,supports DCUDP, DCTCP mode
Network Management	
QOS Management	Supports bandwidth limitation ,IP speed limit
Configuration Methods	Supports telnet, web, ssh, and console configuration methods
Upgrade Method	Supports web upgrade ,supports FOTA
Log Function	Supports local system logs, remote logs, serial port output logs
Network Management Functions	Supports STAR Device Manager platform batch management
Simple Network Management Function	Supports SNMP v1/v2/v3 supports SNMP TRAP function
Traffic Management	Supports traffic threshold setting, traffic statistics and traffic alarm function
Maintenance Tools	Ping, route tracing
Status Inquiry	System status, modem status, network connection status, route status

Product interfaces



Product dimensions

单位:mm
unit:mm

